



We DO

# K-NUMBERS

THE NEW CIR LANGUAGE

it BETTER

# ± K-LETTERS

FOR A NEW CIR REATURE

-ELEMENTS REATED by NATURE . IMPROVED by NOWLEDGE

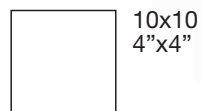




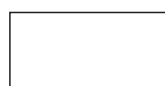
*munni*



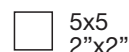
# K-NUMBERS



10x10  
4"x4"



7,5x15  
3"x6"



5x5  
2"x2"





K-TEN green



7,5x15



treccia K-WOOD green  
5x30

K-TEN green



31,7x31,7  
Ceramica Serenissima

**KEY** ELEMENTS  
K-NUMBERS

K-ONE white



10x10

K-FIVE beige



10x10



inserto K-FLOWERS light s/3  
10x10



formella K-FLOWERS light  
20x20



listello K-FLOWERS light  
5x20



v-cap (bordo tavolo 1) white  
6x20



c-cap (spigolo 3 esterno) white  
3x6

K-FIVE beige



31,7x48

Ceramica Serenissima











K-ONE white



10x10



7,5x15



inserto K-MODERN beige s/2  
10x10



treccia K-MODERN beige  
5x20

K-ELEVEN grey



31,7x48  
Ceramica Serenissima





K-SEVEN red



7,5x15



v-cap (bordo tavolo 1) red  
 6x20



c-cap (spigolo 3 esterno) red  
 3x6



mosaico mix light MATTONCINO  
 2,2x4,8

K-SEVEN red



48x48  
 Ceramica Serenissima

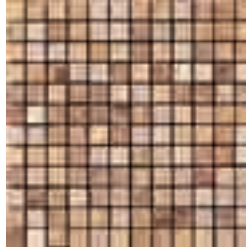




K-ELEVEN grey



10x10



mosaico mix light TESSERA  
2,2x2,2

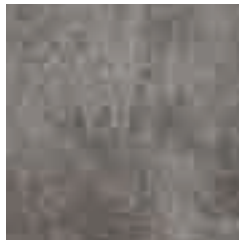


inserto K-BASIC grey s/2  
10x10



treccia K-BASIC grey  
5x20

K-ELEVEN grey



31,7x31,7  
Ceramica Serenissima







K-ELEVEN grey



7,5x15

K-FIVE beige



7,5x15



treccia K-WOOD grey  
5x30

K-ELEVEN grey



48x48

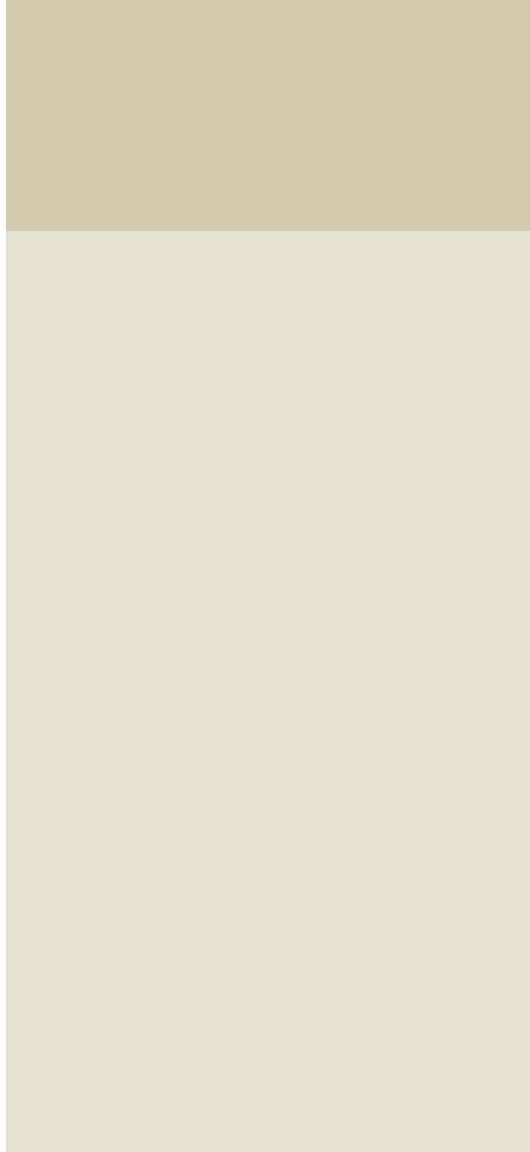


31,7x48

Ceramica Serenissima







K-SEVEN red



7,5x15

K-ONE white



7,5x15

K-ONE white



31,7x31,7

Ceramica Serenissima

OGGETTI D'ARREDO

linea Oggettistica Cerasarda

Cerasarda





K-FIVE beige



7,5x15

K-ELEVEN grey



7,5x15



48x48  
Ceramica Serenissima

OGGETTI D'ARREDO

linea Oggettistica Cerasarda

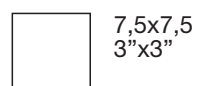
Cerasarda



spelt



# K-LETTERS









K-LETTERS

K-B black



7,5x15

K-C cream



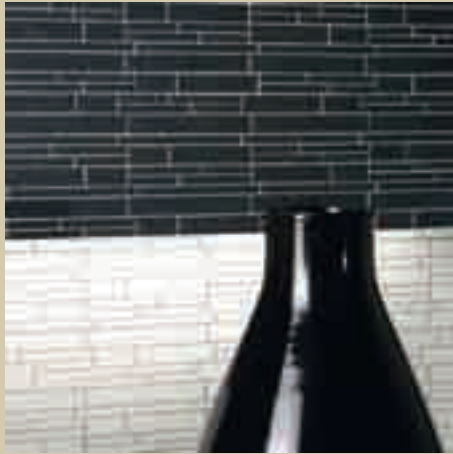
7,5x15

OGGETTI D'ARREDO

linea Oggettistica Cerasarda

Cerasarda





mosaico K-LINES K-B black  
15x30



mosaico K-LINES K-I ice  
15x30

OGGETTI D'ARREDO

linea Oggettistica Cerasarda

Cerasarda





K-LETTERS



K-C cream



7,5x15

K-B black



7,5x15



mosaico K-LINES K-C cream  
15x30

OGGETTI D'ARREDO

linea Oggettistica Cerasarda

Cerasarda



K-I ice



7,5x15

K-B black



7,5x15

K-TEN green



48x48

Ceramica Serenissima



OGGETTI D'ARREDO

linea Oggettistica Cerasarda

Cerasarda









K-C cream



7,5x15

K-B black



7,5x15



7,5x7,5



K-WORDS black s/3  
7,5x7,5

K-ELEVEN grey



31,7x31,7

Ceramica Serenissima



# K-NUMBERS



SHADE SPECTRUM			
Low <input type="checkbox"/>	Moderate <input type="checkbox"/>	High <input checked="" type="checkbox"/>	Random <input type="checkbox"/>

10x10  
4"x4"

7,5x15  
3"x6"

5x5  
2"x2"

K-ONE white



K-FIVE beige



## MOSAICI

Mosaics . Mosaïques . Mosaiken . Мозаики  
su rete . on net . sur filet . auf Netz . на сетке  
30,5x30,5 - 12"x12"

mosaico MATTONCINO  
2,2x4,8 - 7/8x1 7/8"



mix light  
(K-ONE, K-FIVE, K-SEVEN)



mix dark  
(K-TEN, K-ELEVEN)

## DECORI

Decors . Décors . Dekore . Декоры



sigaro K-ELEMENTS white  
2,5x20 - 1"x8"



sigaro K-ELEMENTS beige  
2,5x20 - 1"x8"



inserto K-BASIC white s/2  
10x10 - 4"x4"



inserto K-BASIC beige s/2  
10x10 - 4"x4"



treccia K-BASIC white  
5x20 - 2"x8"



treccia K-BASIC beige  
5x20 - 2"x8"



inserto K-MODERN beige s/2  
10x10 - 4"x4"



treccia K-MODERN beige  
5x20 - 2"x4"



K-SEVEN red



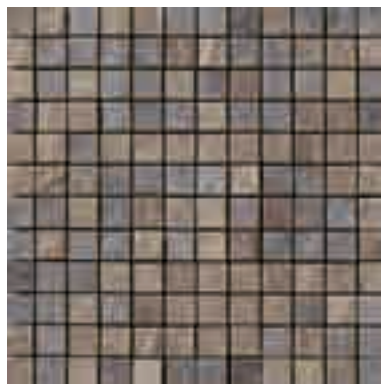
K-TEN green



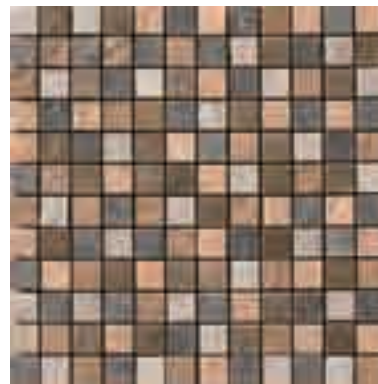
K-ELEVEN grey



mix light  
(K-ONE, K-FIVE, K-SEVEN)



mix dark  
(K-TEN, K-ELEVEN)



mix total  
(K-ONE, K-FIVE, K-SEVEN, K-TEN, K-ELEVEN)


mosaico TESSERA  
2,2x2,2 - 7/8x7/8



sigaro K-ELEMENTS red  
2,5x20 - 1"x8"



sigaro K-ELEMENTS green  
2,5x20 - 1"x8"



sigaro K-ELEMENTS grey  
2,5x20 - 1"x8"



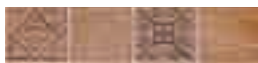
inserto K-BASIC red s/2  
10x10 - 4"x4"



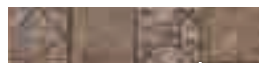
inserto K-BASIC green s/2  
10x10 - 4"x4"



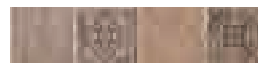
inserto K-BASIC grey s/2  
10x10 - 4"x4"



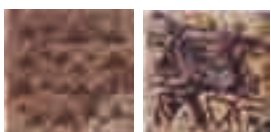
treccia K-BASIC red  
5x20 - 2"x8"



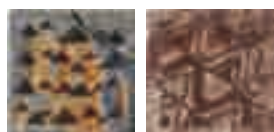
treccia K-BASIC green  
5x20 - 2"x8"



treccia K-BASIC grey  
5x20 - 2"x8"



inserto K-MODERN red s/2  
10x10 - 4"x4"



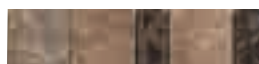
inserto K-MODERN green s/2  
10x10 - 4"x4"



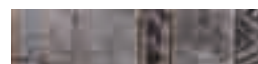
inserto K-MODERN grey s/2  
10x10 - 4"x4"



treccia K-MODERN red  
5x20 - 2"x4"



treccia K-MODERN green  
5x20 - 2"x4"



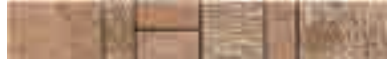
treccia K-MODERN grey  
5x20 - 2"x4"



# K-NUMBERS



inserto K-WOOD beige s/1  
10x10 - 4"x4"



treccia K-WOOD beige  
5x30 - 2"x12"



inserto K-ANIMALS beige s/3  
10x10 - 4"x4"



treccia K-ANIMALS beige  
5x20 - 2"x2"



inserto K-CAVE beige s/3  
10x10 - 4"x4"



treccia K-CAVE beige  
5x20 - 2"x4"



inserto K-ANIMALS grey s/3  
10x10 - 4"x4"



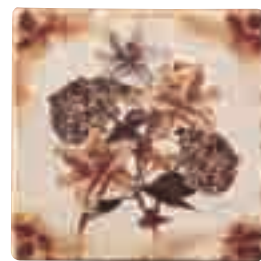
treccia K-ANIMALS grey  
5x20 - 2"x2"



inserto K-CAVE grey s/3  
10x10 - 4"x4"



treccia K-CAVE grey  
5x20 - 2"x4"



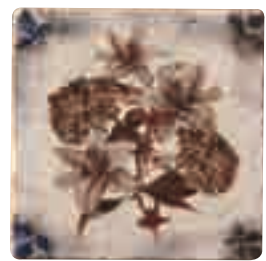
formella K-FLOWERS light  
20x20 - 4"x4"



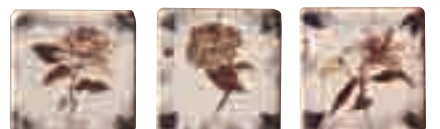
inserto K-FLOWERS light s/3  
10"x10" - 4"x4"



listello K-FLOWERS light  
5x20 - 2"x8"



formella K-FLOWERS dark  
20x20 - 4"x4"



inserto K-FLOWERS dark s/3  
10"x10" - 4"x4"



listello K-FLOWERS dark  
5x20 - 2"x8"





inserto K-METAL red s/1  
10x10 - 4"x4"



listello K-METAL red  
4,5x30 - 1"3/4



matita K-METAL red  
1,5x30 - 3/4"x12"



inserto K-ANIMALS green s/3  
10x10 - 4"x4"



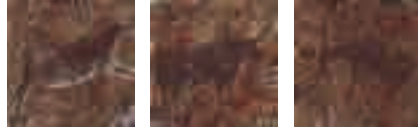
treccia K-ANIMALS green  
5x20 - 2"x2"



inserto K-CAVE green s/3  
10x10 - 4"x4"



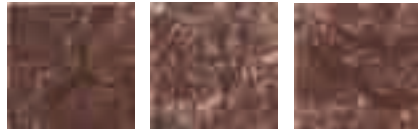
treccia K-CAVE green  
5x20 - 2"x4"



inserto K-ANIMALS red s/3  
10x10 - 4"x4"



treccia K-ANIMALS red  
5x20 - 2"x2"



inserto K-CAVE red s/3  
10x10 - 4"x4"



treccia K-CAVE red  
5x20 - 2"x4"

## PEZZI SPECIALI

Special Pieces . Pièces Spéciales . Spezielle Stücke  
Специальные Изделия

Disponibili nei colori . Available in the colors . Disponibles dans les couleurs  
In den Farben lieferbar . Поставляется следующих цветов:

K-ONE, K-FIVE, K-SEVEN, K-TEN, K-ELEVEN



Bullnose  
10x10 - 4"x4"



Corner  
10x10 - 4"x4"



Q-round outside  
(sguscia 2 esterna)  
3x20 - 1"3/16x8"



Beak outside  
(unghia 5 esterna)  
3x3 - 1"3/16x1"3/16



V-cap  
(bordo tavolo 1)  
6x20 - 2"3/8x8"



C-cap  
(spigolo 3 esterno)  
3x6 - 1"3/16x2"3/8



formella K-FRUITS grey  
20x30 - 8"x12"



inserto K-FRUITS grey s/2  
10"x10" - 4"x4"



listello K-FRUITS grey  
5x20 - 2"x8"



formella K-FRUITS beige  
20x30 - 8"x12"



inserto K-FRUITS beige s/2  
10"x10" - 4"x4"



listello K-FRUITS beige  
5x20 - 2"x8"

## LAVELLI

## grès

Basins . Éviers . Waschbecken . Мойки

Disponibili nei colori . Available in the colors . Disponibles dans les couleurs  
In den Farben lieferbar . Поставляется следующих цветов:

K-ONE, K-FIVE, K-SEVEN, K-TEN, K-ELEVEN



Catino d'appoggio  
rotondo monocoloro  
∅ 39 - 15"3/8



Catino d'appoggio  
ovale monocoloro  
39,5x50 - 15"9/16x19"11/16



Catino d'appoggio  
rotondo bicolore  
∅ 39 - 15"3/8



Catino d'appoggio  
ovale bicolore  
39,5x50 - 15"9/16x19"11/16



Catino d'appoggio  
rotondo metallizzato  
bronzo/rame  
∅ 39 - 15"3/8



Catino d'appoggio  
ovale metallizzato  
bronzo/rame  
39,5x50 - 15"9/16x19"11/16



# K-LETTERS



SHADE SPECTRUM			
Low <input type="checkbox"/>	Moderate <input checked="" type="checkbox"/>	High <input type="checkbox"/>	Random <input type="checkbox"/>

7,5x15  
3"x6"

7,5x7,5  
3"x3"

## K-B black



## MOSAICI

Mosaics . Mosaïques . Mosaiken . Мозаики  
su rete . on net . sur filet . auf Netz . на сетке  
15x30 - 6"x12"

### mosaico K-LINES



K-B black

## DECORI

Decors . Décors . Dekore . Декоры



inserto K-WORDS black s/3  
7,5x15 - 3"x6"



inserto K-LOVE black s/1  
7,5x15 - 3"x6"



tozzetto K-LOVE black s/1  
7,5x7,5 - 3"x3"



inserto K-SUDOKU A black s/1  
7,5x15 - 3"x6"



inserto K-SUDOKU B black s/1  
7,5x15 - 3"x6"



fascia K-ACANTO black  
7,5x15 - 3"x6"



bacchetta ON LINE nero  
1,2x30 - 1/2"x12"

## K-C cream



K-C cream

## K-I ice



K-I ice



inserto K-WORDS cream s/3  
7,5x15 - 3"x6"



inserto K-WORDS ice s/3  
7,5x15 - 3"x6"



inserto K-PICTURES  
LEAVES cream s/1  
7,5x15 - 3"x6"



inserto K-PICTURES  
GARDEN cream s/1  
7,5x15 - 3"x6"



tozzetto K-PICTURES  
COROLLA cream s/1  
7,5x7,5 - 3"x3"



inserto K-PICTURES  
LEAVES ice s/1  
7,5x15 - 3"x6"



inserto K-PICTURES  
GARDEN ice s/1  
7,5x15 - 3"x6"



tozzetto K-PICTURES  
COROLLA ice s/1  
7,5x7,5 - 3"x3"



inserto K-CORN cream s/1  
7,5x15 - 3"x6"



tozzetto K-CORN cream s/1  
7,5x7,5 - 3"x3"



inserto K-CORN ice s/1  
7,5x15 - 3"x6"



tozzetto K-CORN ice s/1  
7,5x7,5 - 3"x3"



inserto K-LOVE cream s/1  
7,5x15 - 3"x6"



tozzetto K-LOVE cream s/1  
7,5x7,5 - 3"x3"



inserto K-LOVE ice s/1  
7,5x15 - 3"x6"



tozzetto K-LOVE ice s/1  
7,5x7,5 - 3"x3"



inserto K-SUDOKU A cream s/1  
7,5x15 - 3"x6"



inserto K-SUDOKU B cream s/1  
7,5x15 - 3"x6"



inserto K-SUDOKU A ice s/1  
7,5x15 - 3"x6"



inserto K-SUDOKU B ice s/1  
7,5x15 - 3"x6"



fascia K-ACANTO cream  
7,5x15 - 3"x6"



fascia K-ACANTO ice  
7,5x15 - 3"x6"

bacchetta ON LINE oro  
1,2x30 - 1/2"x12"

bacchetta ON LINE argento  
1,2x30 - 1/2"x12"



K-ONE white



48x48 - 19"x19"



31,7x48 - 12"1/2x19"



31,7x31,7 - 12"1/2x12"1/2



15,8x31,7 - 6"3/16x12"1/2



15,8x15,8 - 6"3/16x6"3/16

K-FIVE beige



48x48 - 19"x19"



31,7x48 - 12"1/2x19"



31,7x31,7 - 12"1/2x12"1/2



15,8x31,7 - 6"3/16x12"1/2



15,8x15,8 - 6"3/16x6"3/16

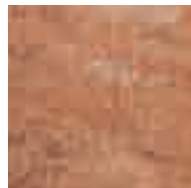
K-SEVEN red



48x48 - 19"x19"



31,7x48 - 12"1/2x19"



31,7x31,7 - 12"1/2x12"1/2



15,8x31,7 - 6"3/16x12"1/2

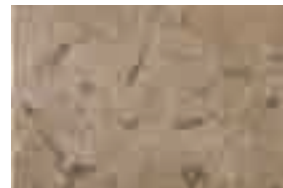


15,8x15,8 - 6"3/16x6"3/16

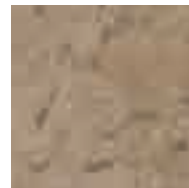
K-TEN green



48x48 - 19"x19"



31,7x48 - 12"1/2x19"



31,7x31,7 - 12"1/2x12"1/2



15,8x31,7 - 6"3/16x12"1/2



15,8x15,8 - 6"3/16x6"3/16

K-ELEVEN grey



48x48 - 19"x19"



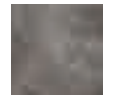
31,7x48 - 12"1/2x19"



31,7x31,7 - 12"1/2x12"1/2



15,8x31,7 - 6"3/16x12"1/2



15,8x15,8 - 6"3/16x6"3/16

"K-Elements" è disponibile nei formati 48x48 . 31,7x48 . 31,7x31,7 . 15,8x31,7 e 15,8x15,8 presso Ceramica Serenissima  
"K-Elements" is available in sizes 48x48 - 19"x19" . 31,7x48 - 12"1/2x19" . 31,7x31,7 - 12"1/2x12"1/2 . 15,8x31,7 - 6"3/16x12"1/2 . 15,8x15,8 - 6"3/16x6"3/16 by Ceramica Serenissima





<b>DESCRIZIONE IMBALLO</b> <i>Packing - Emballage - Verpackung - Упаковка</i>						
<b>Formato Nominale</b> Nominal Size Format Nominal Nennformat Формат	<b>Pezzi per Scatola</b> Pieces per Carton Pièces par Boîte Stücke pro Karton Штук/Короб.	<b>Mq Nom. per Scatola</b> Nom. sqm per Carton Mc Nom. par Boîte Qm Nom. pro Karton M2/Короб.	<b>Kg per Scatola</b> Kilograms per Carton Kg par Boîte Kg pro Karton Кг/Короб.	<b>Scatole per Paletta</b> Cartons per Pallet Boîtes par Pallet Kartons pro Pallet Короб./Поддон	<b>Mq per Paletta</b> Sqm per Pallet Mc par Pallet Qm pro Pallet M2/Поддон	<b>Kg per Paletta</b> Kilograms per Pallet Kg par Pallet Kg pro Pallet Кг/Поддон
<b>K-NUMBERS</b>						
<b>5x5 - 2"x2"</b>	50	-	-	-	-	-
<b>10x10 - 4"x4"</b> <b>Sfuso</b> Loose En vrac Lose Россыпь	72	0,72	14,70	72	51,84	1.080
<b>7,5x15 - 3"x6"</b>	64	0,72	15,00	85	61,20	1.297
<b>mosaico</b> <b>30,5x30,5 - 12"x12"</b>	5	0,45	11,50	60	27,00	712
<b>K-LETTERS</b>						
<b>7,5x15 - 3"x6"</b>	64	0,72	15,00	85	61,20	1.297
<b>7,5x7,5 - 3"x3"</b>	10	-	-	-	-	-
<b>mosaico K-LINES</b> <b>15x30 - 6"x12"</b>	10	0,45	11,50	60	27,00	712

<b>NOTE TECNICHE</b> <i>Technical notes - Notes techniques - Technische Anmerkungen - Технические замечания</i>
La particolare stonizzazione voluta per questo prodotto presuppone un'attenta miscelazione durante la posa in opera. Per la pulizia delle decorazioni non usare assolutamente prodotti abrasivi. Ceramica Cir si riserva la facoltà di modificare in qualunque momento le informazioni e le caratteristiche illustrate nel presente catalogo, che non sono comunque da ritenere legalmente vincolanti. I colori e le caratteristiche estetiche dei prodotti sono quanto più possibile vicini a quelli reali, nei limiti consentiti dai processi di stampa.
The intentional variations in colour of this product requires careful mixing during laying. The use of abrasive for cleaning decorated tiles is absolutely forbidden. Ceramica Cir reserves the right to modify the information and the characteristics illustrated in this catalogue (which are in any case not legally binding) at any moment. The colours and appearance features of the products are as close as possible to reality, within the limitation of the printing process.
Le jeu de nuances prévu pour ce produit requière une distribution attentive des carreaux durant la pose. Pour le nettoyage des décorations ne faire en aucun cas usage de produits abrasifs. Ceramica Cir se réserve la faculté de modifier à tout moments les informations et les caractéristiques figurant dans le présent catalogue, lesquelles niengagent pas par le fabricant au plan légal. Les couleurs et les caractéristiques esthétiques sont fidèles aux couleurs et caractéristiques réelles dans les limites des procédés d'impression.
Die besondere Farbtonunstimmigkeit die bei diesem Produkt absichtlich vorhanden ist, setzt eine sorgfältige Mischung bei der Verlegung voraus. Zur Reinigung der Dekore dürfen auf keinen Fall reibende Produkte verwendet werden. Die Firma Ceramica Cir behält sich vor, die in diesem Katalog enthaltenen Informationen und Eigenschaften jederzeit zu ändern; sie gelten auf keinen Fall als gesetzlich bindend. Die Farben und ästhetischen Eigenschaften der Produkte kommen innerhalb der Möglichkeiten der Druckverfahren den tatsächlichen Eigenschaften so weit wie möglich nahe.
Все форматы являются номинальными. Для чистки рисунков запрещается использовать абразивные средства. Ceramica Cir оставляет за собой право изменять в любой момент данные и характеристики, приведенные в настоящем каталоге, которые в любом случае не считаются юридически обязательными. Цветовая окраска и эстетические характеристики изделий приближаются как можно больше к реальным, в пределах, допускаемых процессами печати.

<b>CONSIGLI PER LA POSA</b> <i>Laying suggestions - Conseils pour la pose - Verlegehinweise - Рекомендации по Укладке</i>
Stendere a terra il prodotto per controllare l'effetto d'insieme. Posare il materiale controllandone accuratamente calibro, tonalità e scelta. • Nella posa è consigliabile lasciare una fuga di 2 mm fra le piastrelle, utilizzando stucco chiaro o in tono. • È comunque compito del progettista stabilire, in funzione della struttura e della destinazione d'uso, il corretto modo di applicazione delle piastrelle.
Place the product on the floor to check the overall effect. Lay the material carefully checking the colour, work size and sorting class. • When laying the product leave a 2 mm - 1/8 joint between the tiles and fill with light grout or of the same colour as the tile. • However, the designers has to establish the correct way of application of the tiles depending on the structure and the foreseen utilization.
Etendre le produit sur le sol pour contrôler l'effet d'ensemble. Poser le matériel en en contrôlant minutieusement le calibre, la tonalité et le choix. • Lors de la pose, on recommande de laisser un joint de 2 mm entre les carreaux, en utilisant un mastic clair ou du même ton. • D'ailleurs c'est le concepteur qui doit établir, sur la base de la structure et de la destination d'emploi, le procédé d'application correct des carreaux.
Legen Sie das Material am Boden aus und überprüfen Sie die Gesamtwirkung. Verlegen Sie das Material und kontrollieren Sie dabei sorgfältig Kaliber, Farbton und Auswahl. • Bei der Verlegung sollte eine Fuge von einem 2 mm zwischen den Fliesen gelassen, indem heller Kitt oder Kitt mit gleichem Ton gebraucht wird. • Es ist auf jeden Fall Aufgabe des Planers, nach der Struktur und dem Verwendungszweck, die richtige Verlegeart der Fliesen zu bestimmen.
Разложить изделия на полу для проверки общего эффекта. Укладывать материал, тщательно проверяя калибр, тональность и сорт. • При укладке рекомендуется оставлять шов между плитками шириной не менее 2 мм, используя подходящую по тону замазку. • В любом случае является задачей проектировщика, в зависимости от структуры и назначения, определять соответствующий способ укладки плитки.

### CARATTERISTICHE TECNICHE GRES FINE PORCELLANATO SMALTATO CIR - ISO 13006

TECHNICAL FEATURES CIR GLAZED FINE PORCELAIN STONWARE- ISO 13006 - CARACTÉRISTIQUES TECHNIQUES GRÈS FIN ÉMAILLÉ CIR - ISO 13006  
 TECHNISCHE EIGENSCHFTEN CIR GLASIERTES FEINSTEINZEUG - ISO 13006 - ТЕХНИЧЕСКИЕ ХАРАКТЕРИСТИКИ CIR ТОНКОГО ГЛАЗУРОВАННОГО ФАРФОРОВОГО КЕРАМОГРАНИТА - ISO 13006

	<b>Proprietà fisico-chimiche</b> Physical-chemical properties / Propriétés physico-chimiques Physisch-chemische Eigenschaften - Физико-химические свойства		<b>Metodo di prova</b> Standard of test / Norme du test Testnorm / Метод испытания	<b>Valore medio</b> Mean value / Valeur moyenne Mittelwert / Среднее значение	
	Dimensioni Dimensions Dimensions Abmessungen Размеры		ISO 10545 - 2		
	Lunghezza e larghezza Length and width Longueur et largeur Länge und Breite Длина и ширина	W		± 0,5% max	
		10 test		± 0,3% max	
	Spessore Thickness Épaisseur Stärke Толщина			± 10% max	
	Rettilineità degli spigoli Straightness of sides Rectitude des avêtes Kantengeradheit Прямолинейность кромок			± 0,3% max	
	Ortogonalità Rectangularity Orthogonalité Rechtwinkligkeit Ортогональность			± 0,5% max	
	Planarità Surface flatness Planéité Ebenflächigkeit Плоскостность		± 0,5% max		
	Assorbimento d'acqua Water absorption Absorption d'eau Wasseraufnahme Водопоглощение		ISO 10545 - 3	10x10	0,5% < E ≤ 3% Blb GL
				7,5x15	E ≤ 0,5% Bla GL
	Resistenza al gelo Frost resistance Résistance au gel Frostbeständigkeit Морозостойкость		ISO 10545 - 12		Ingelivo Frost proof Résistant au gel Frostsicher Морозостойкий
	Resistenza al cavillo di piastrelle smaltate Crazing resistance of glazed tiles Résistance à la tréaillure des carreaux émaillés Haarrißbeständigkeit der glasierten Fliesen Стойкость глазурованной плитки к кракелюру		ISO 10545 - 11		Resistente Resistant Résistant Widerstandsfähig Устойчивый
	Resistenza della superficie (scala MOHS) Scratch hardness (MOHS scale) Dureté de la surface (échelle MOHS) Oberflächenhärte (MOHS skala) Поверхностная прочность по (шкале Мооса)		EN 101	10x10	K-SEVEN, K-TEN: MOHS 8,5 K-ONE, K-FIVE, K-ELEVEN: MOHS 9
				7,5x15	MOHS 8,5
	Resistenza alla abrasione della superficie di piastrelle smaltate Resistance to surface abrasion of glazed tiles Résistance à l'abrasion de la surface des carreaux émaillés Widerstand gegen Abrieb der Oberfläche der glasierten Fliesen Стойкость глазурованной плитки к поверхностному истиранию		ISO 10545 - 7		Classe 4 Class 4 Classe 4 Gruppe 4 Класс 4
	Resistenza ai prodotti chimici di uso domestico Resistance to household chemicals Résistance aux produits chimiques ménagers Widerstand gegen Haushaltsreiniger Стойкость к бытовым химикатам		ISO 10545 - 13		Classe GA Class GA Classe GA Gruppe GA Класс GA
	Resistenza agli acidi e alle basi a bassa concentrazione Resistance to low concentrations of acids and bases Résistance aux acides et aux bases à faible concentration Widerstand gegen schwach konzentrierten Säuren und Laugen Стойкость к низкоконцентрированным кислотам и щелочам				Classe GLA Class GLA Classe GLA Gruppe GLA Класс GLA
	Resistenza alle macchie di piastrelle smaltate Resistance to stains of glazed tiles Résistance aux taches des carreaux émaillés Widerstand gegen Fleckenbildner der glasierten Fliesen Стойкость глазурованной плитки к образованию пятен		ISO 10545 - 14		Classe 5 Class 5 Classe 5 Gruppe 5 Класс 5
	Resistenza alla flessione Bending strength Résistance à la flexion Biegezugfestigkeit Прочность на изгиб	Modulo di rottura - Modulus of rupture Module de rupture - Bruchmodul - Модуль жесткости	ISO 10545 - 4		R ≥ 35 N/mm <sup>2</sup>
		Carico di rottura - Breaking of rupture Charge de rupture - Bruchkraft - Сфкшсц вш кщееркф			S ≥ 1300 N

Prova eseguita su: 10x10 cm - 7,5x15 cm / Test carried out on: 10x10 cm - 7,5x15cm (4"x4" - 3"x6") / Essai réalisé sur: 10x10 cm - 7,5x15 cm  
 Getestet auf: 10x10 cm - 7,5x15 cm / Испытание выполнено на форматах: 10x10 см - 7,5x15 см



Per informazioni relative ai dati tecnici su marcatura CE vedere il sito [www.cir.it](http://www.cir.it)  
Please refer to our web site [www.cir.it](http://www.cir.it) for technical information related to CE labeling  
Pour tout renseignement sur l'avis technique de la marque CE veuillez consulter le site [www.cir.it](http://www.cir.it)  
Informationen bezüglich technischer Daten zur Beschriftung CE entnehmen Sie unserer Website [www.cir.it](http://www.cir.it)  
További információkért, kérjük, látogasson meg a honlapunkat: [www.cir.it](http://www.cir.it)

Seconda edizione: giugno 2007

**COMMUNICATION STRATEGY: Stefano Storchi**

PROGETTO: OMNIADVERT

COORDINAMENTO: Ufficio Marketing Cir

FOTO: Foto Mussatti - Fotografia Gamma

FOTOELABORAZIONI: Omniadvert - Fotografia Gamma

STAMPA: Litographic Group

CREDITS: Cerasarda Design - Studio Original Designers 6r5 Network. [od6r5.com](http://od6r5.com)

© Copyright 2007 Serenissima Cir Industrie Ceramiche S.p.A. (Società Unipersonale)



Ceramic Tiles of Italy



**Ceramica Cir**  
Via A. Volta 23/25 - 42013 Casalgrande (RE) Italy  
Tel. +39-0522-998911 - Fax Italy +39-0522-998910 - Fax Export +39-0522-998930  
www.cir.it - e-mail: cir@cir.it - e-mail Italy: italia@cir.it - e-mail Export: export@cir.it  
**Serenissima Cir Industrie Ceramiche spa**  
Società Unipersonale  
[www.serenissimacir.com](http://www.serenissimacir.com)

**SERENISSIMA CIR**  
INDUSTRIE CERAMICHE

**DAL 1967**